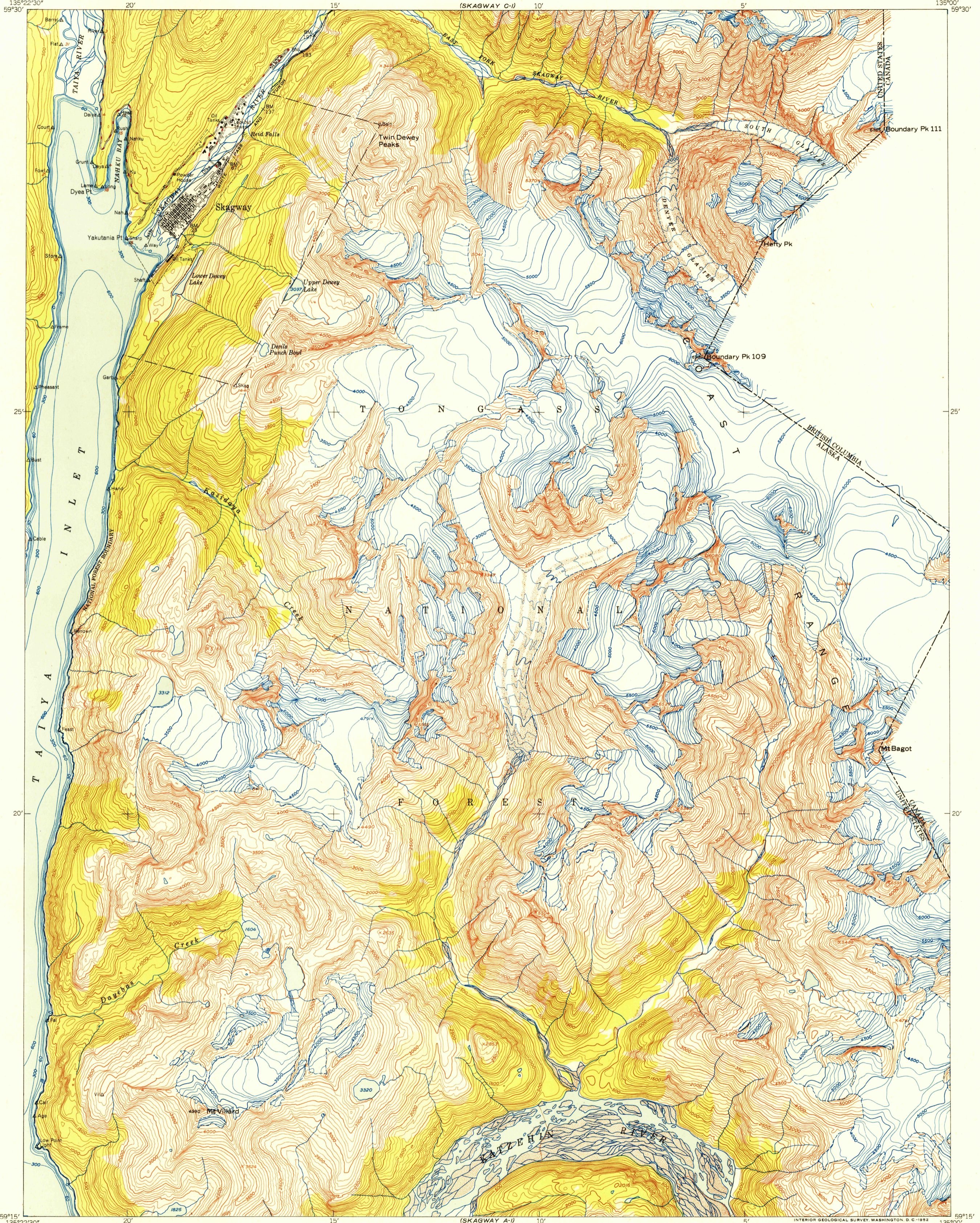


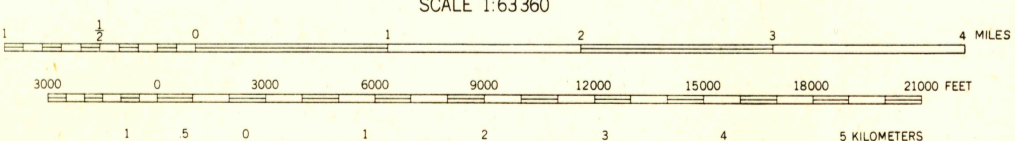
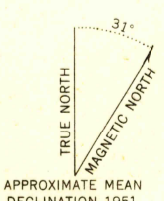
U. S. G. S.
FILE COPY
Inspection and Editing.

UNITED STATES
DEPARTMENT OF THE INTERIOR
GEOLOGICAL SURVEY

SKAGWAY (B-1) QUADRANGLE
ALASKA-FIRST JUDICIAL DIVISION
1:63 360 SERIES (TOPOGRAPHIC)



Mapped, edited, and published by the Geological Survey
Control by USC&GS and IBC
Hydrography compiled from USC&GS chart 8303
Topography from aerial photographs by multiplex methods
Aerial photographs taken July 1948
Universal Transverse Mercator projection, zone 8
1927 North American datum
Unchecked elevations shown in brown and blue



CONTOUR INTERVAL 100 FEET
DATUM IS MEAN SEA LEVEL
DEPTH CURVES IN FEET—DATUM IS MEAN LOWER LOW WATER
SHORELINE SHOWN REPRESENTS THE APPROXIMATE LINE OF MEAN HIGH WATER
THE AVERAGE RANGE OF TIDE IS APPROXIMATELY 14 FEET

ROAD CLASSIFICATION

ALL WEATHER ROADS	DRY WEATHER ROADS
Hard-surface	Improved dirt
Other	Unimproved dirt
Trails	

USGS
Historical File
Topographic Division

SKAGWAY (B-1), ALASKA
N5915-W13500/15X22.5
1951

FOR SALE BY U. S. GEOLOGICAL SURVEY, FEDERAL CENTER, DENVER, COLORADO OR WASHINGTON 25, D. C.
A FOLDER DESCRIBING TOPOGRAPHIC MAPS AND SYMBOLS IS AVAILABLE ON REQUEST

U. S. G. S.
FILE COPY
Inspection and Editing.

JUL 3 1952 2095